



# WIZZILAB

Connecting Things

Your IoT Technology Partner

# TRIPLE MODE IoT STACK



## Stay In Control !

Because your devices are deployed for years...

- Triple Connectivity without extra Hardware
- Switch Connectivity Dynamically
- Configure Devices Remotely
- Upgrade Firmware Over The Air

Designed and Licensed by  
**WIZZILAB**  
Connecting Things

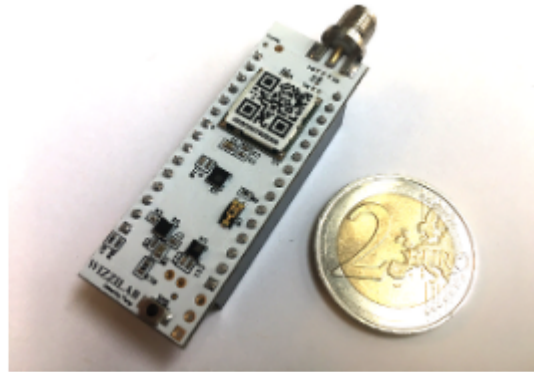
# IoT Connectivity Platforms

3

Market-proven  &  stack IP



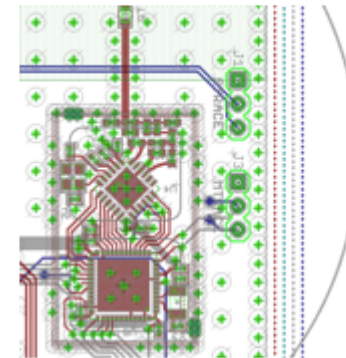
Gateways



Wizzikit  
MBED Nucleo shields



Modules

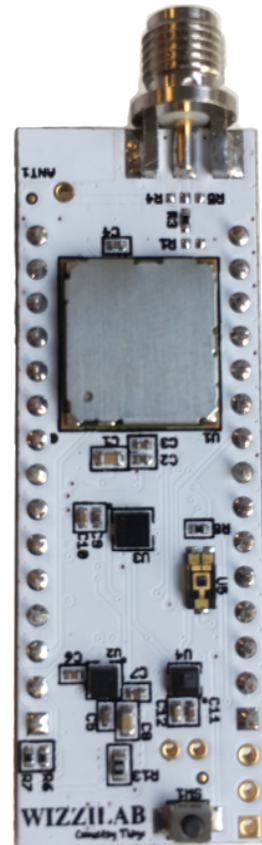


Reference Design +  
Programmed MCU's

# WizziKit: IoT SHIELD

## TRIPLE MODE IoT MODEM

(Murata CMWX1ZZABZ + WizziLab Triple Stack)



## SENSORS



Light Sensor (TEMT6000)



Magnetometer (LSM303C)



Accelerometer (LSM303C)



Humidity Sensor (HTS221)

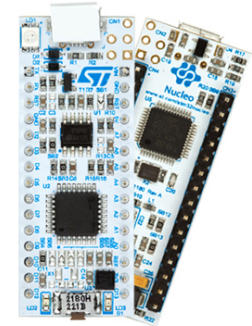


Temperature Sensor (HTS221)



Pressure Sensor (LPS25HB)

Perfect companion  
For your Nucleo32

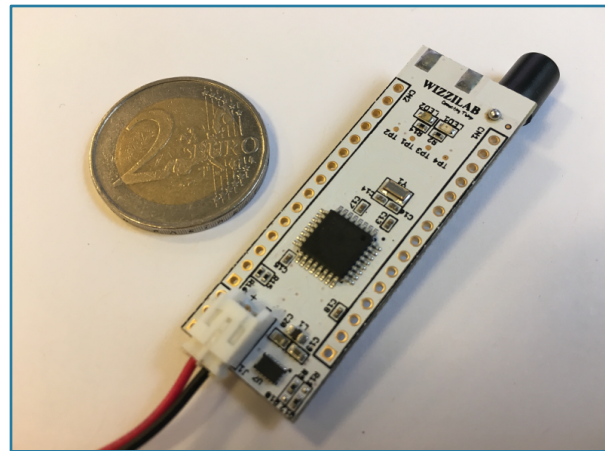
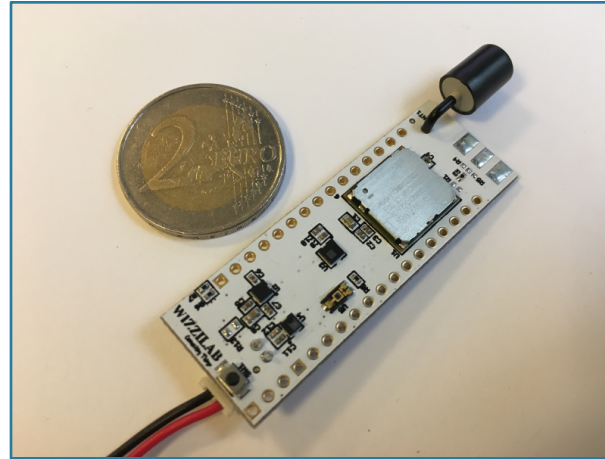


Designed by  
**WIZZILAB**  
Connecting Things

# WiSense: IoT NODE

## TRIPLE MODE IoT MODEM

(Murata CMWX1ZZABZ + WizziLab Triple Stack)



## SENSORS



Light Sensor (TEMT6000)



Magnetometer (LSM303C)



Accelerometer (LSM303C)



Humidity Sensor (HTS221)



Temperature Sensor (HTS221)



Pressure Sensor (LPS25HB)

## APPLICATION PROCESSOR



Cortex M0+ (STM32L081KZT6)

Designed by  
**WIZZILAB**  
Connecting Things

# WizziCloud





# Design and Deployment

From the Idea...



...to the Thing



Hardware



Firmware



Low Power



Wireless



Cloud



Apps



Productization

# WIZZILAB

Connecting Things

Contact us at  
**[info@wizzilab.com](mailto:info@wizzilab.com)**